

# STAINLESS STEEL PEDESTAL HAND SINK

ITEM NO. \_\_\_\_\_

QUANTITY NO. \_\_\_\_\_

JOB NO. \_\_\_\_\_

SPEC NO. \_\_\_\_\_

## FEATURES & BENEFITS:

- Economy hand sink designed for the cost conscious customer.
- Integrate hand sinks into work areas for employees to always keep their hands clean and free from bacteria when serving food, working in warehouse, or any other industrial type area.
- Sink features marine edges to keep water in the bowl and off the floor.
- Standard with 20 gauge, 304 stainless steel drawn bowl.
- 9 1/2" high backsplash.



STAINLESS STEEL HAND SINK

*Laboratory Certification  
and Approval Symbols:*



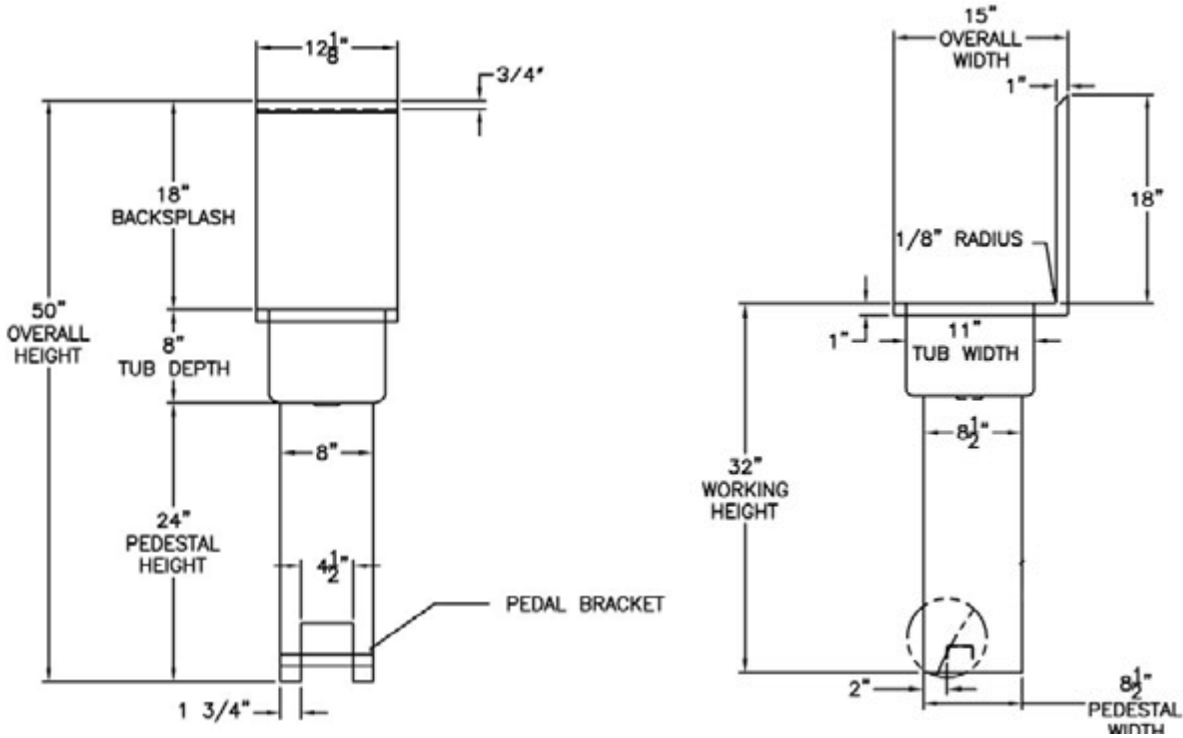
141 Eileen Way • Syosset, NY 11791 • Tel: 1-800-444-3595 • Fax: 516-921-0538  
[www.winholt.com](http://www.winholt.com) • [sales@winholt.com](mailto:sales@winholt.com)

PENNSYLVANIA • GEORGIA • TEXAS • CALIFORNIA



ITEM NO. \_\_\_\_\_  
 JOB NO. \_\_\_\_\_  
 SPEC NO. \_\_\_\_\_

# STAINLESS WALL MOUNT HAND SINK - ECONOMY



Model Number	Bowl Size		Bowl Depth		Overall Length		Overall Depth		Approx. Weight	
	(in)	(mm)	(in)	(mm)	(in)	(mm)	(in)	(mm)	(lbs)	(kg)
<b>Wall Mounted, Hand Sink - Economy</b>										
WHPS-1110	10"x11"	254x279	8"	203	12 1/8"	305	15"	381	45	20

Win-Holt Equipment is a leading manufacturer of material & food handling equipment. Since 1946, retailers and restaurant chains have trusted Win-Holt's equipment to ensure increased productivity and efficiency in their operation. Multiple locations reduce logistics and transportation costs. All Win-Holt associates are dedicated to customer satisfaction.

For general sales and engineering information only. All units are subject to change without notice. Please consult factory for certified specifications.

141 Eileen Way • Syosset, NY 11791 • Tel: 1-800-444-3595 • Fax: 516-921-0538  
 www.winholt.com • sales@winholt.com