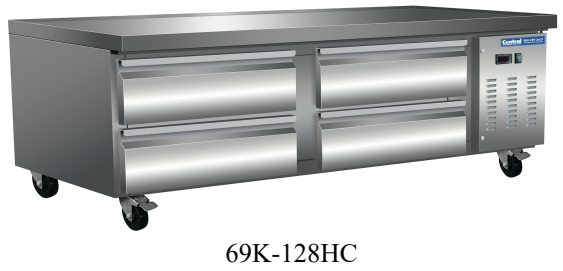


CHEF BASES

Model: 69K-126HC 69K-127HC 69K-128HC



Central Chef Bases are designed for performance. Refrigerated chef bases provide easily accessible ingredient storage and keep them at the perfect temperature and within easy reach of your food preparation area, increasing your efficiency and production ability. Countertop appliances such as grills and broilers can be placed on top of these chef stands, making for a productive work station.

FEATURES

- 5" casters (shorter casters are an available option)
- Available in multiple sizes to suit your specific needs
- Solid state digital control scheme

TEMPERATURE

- Holding temperature: 34° to 41°F (1° to 5°C)
- Forced-air refrigeration for ideal temperature performance
- Oversized, energy-efficient cooling system
- Full extension, heavy-duty drawer slides

CONSTRUCTION

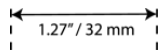
- Exterior Material: Durable, easy to clean stainless steel
- Urethane insulated walls and doors
- Front-breathing refrigeration system
- Integrated condensate evaporator pan so no floor drain connection is needed

REFRIGERANT

Environmentally-friendly R290a propane

ELECTRIC

115/60Hz/1 Ph (NEMA 5-15)
Cord set includes plug & 9.8' (3m) cord



NEMA 5-15P



Intertek
Conforms to
ANSI-NSF 7



Intertek
Conforms to
ANSI UL 471



Environmentally
Friendly



Exceeds today's energy
consumption standards

WARRANTY (USA / CANADA)

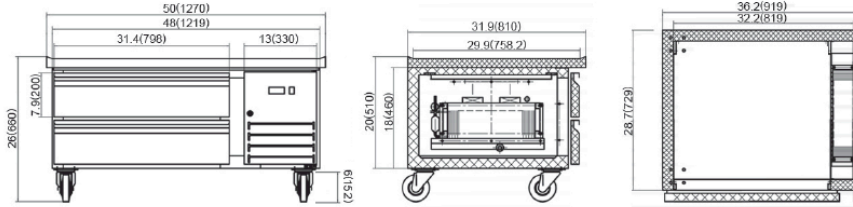
Three (3) year parts and on-site labor
Five (5) year compressor

Administered by Central, 800-289-3637

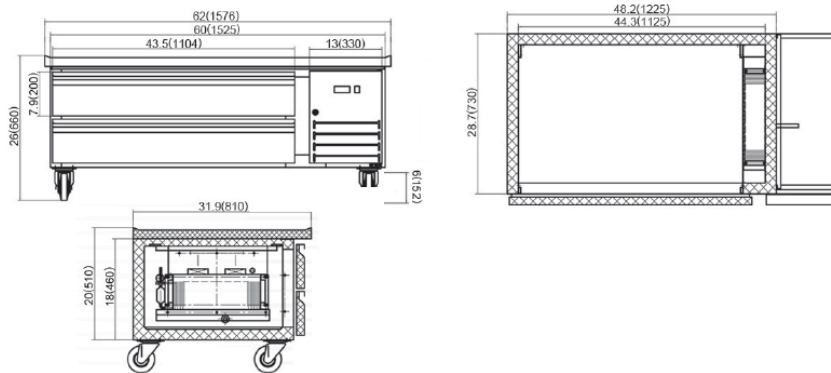
Due to periodic changes in designs, methods, procedures, policies and regulations, the specifications contained in this sheet are subject to change without notice. While we exercise good faith efforts to provide information that is accurate, we are not responsible for errors or omissions in information provided or conclusions reached as a result of using the specifications. By using the information provided, the user assumes all risks in connection with such use.

CHEF BASES

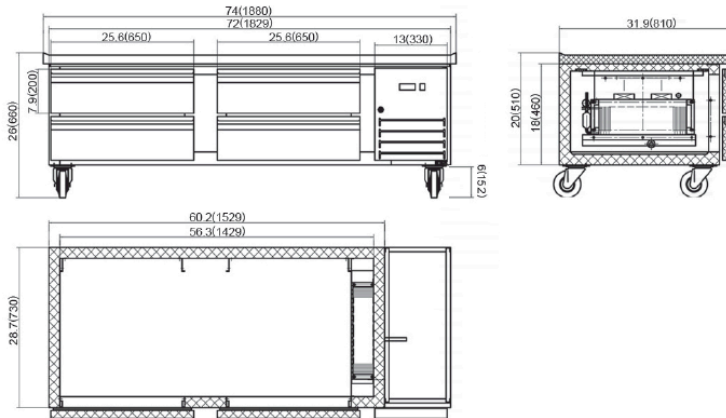
69K-126HC



69K-127HC



69K-128HC



	External Dimensions* in / mm	Internal Dimensions in / mm	Capacity	Temperature Range	Voltage	Max Amp Draw	R290a Charge Size	Uni Weight	Shipping Weight
69K-126HC	50 x 31.9 x 26 1270 x 810 x 660	27.8 x 25.2 x 13.9 707 x 639 x 353	6.5 Cu Ft 184 L	34°-41°F 1°-5° C	115V/60Hz/1	5.8	2.82 oz	234 lb 106 kg	260 lb 118 kg
69K-127HC	62 x 31.9 x 26 1576 x 810 x 660	40 x 25.2 x 13.9 1017 x 639 x 353	8.8 Cu Ft 249 L	34°-41°F 1°-5° C	115V/60Hz/1	5.8	2.82 oz	269 lb 122 kg	302 lb 137 kg
69K-128HC	74 x 31.9 x 26 1880 x 810 x 660	52 x 25.2 x 13.9 1320 x 639 x 353	11.1 Cu Ft 314.3 L	34°-41°F 1°-5° C	115V/60Hz/1	5.8	2.82 oz	313 lb 142 kg	353 lb 160 kg

*Listed heights include casters. An optional shorter caster set is available that can bring the overall work height to 22.81"

Due to periodic changes in designs, methods, procedures, policies and regulations, the specifications contained in this sheet are subject to change without notice. While we exercise good faith efforts to provide information that is accurate, we are not responsible for errors or omissions in information provided or conclusions reached as a result of using the specifications. By using the information provided, the user assumes all risks in connection with such use.