

Automatic Hand Sanitizer Dispenser

TLC SCIENTIFIC

Features and Construction

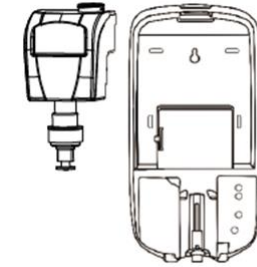
- Constructed of white ABS plastic with sanitizing capacity of 1000ml
- Does not include hand sanitizer product, must purchase separately
- Unit can be refilled directly with sanitizer; no pouches or cartridges needed
- Hands free dispensing, single dosage .07ml, double dosage is 1.4 ml
- Minimizes cross contamination with its touchless, automatic system
- Pump type accommodates gel sanitizer
- Battery version: Eight AA batteries
- External electric version: 100-240 V
- Electric adapter or batteries is not included
- Wall mount unit is ideal for tight compact spaces



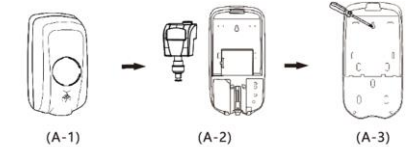
BACK



INTERNAL



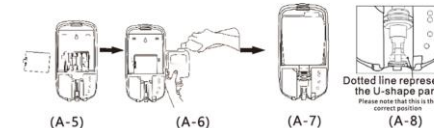
① Remove bottle



(A-1)

(A-2)

(A-3)



Insert the key into the corresponding hole of dispenser. (A-1)
pressing down on key hole and swinging cover down. (A-2)
Remove bottle. (A-3)
According to the screw hole position on the bottom shell, use pen to mark, fix screws and then hang dispenser. (A-4)
Open the battery compartment cover and insert 4 or 8 AA alkaline batteries correctly. (A-5)
Pour liquid into the bottle (Must remove bottle to add liquid). (A-6)

Contact information

- Phone: 954-202-7419
- Email: sales@tlcscientific.com